

**SMART WATER: The time is now!**



5TH ANNUAL CONFERENCE

LONDON • 29-30 APRIL 2015



# SWAN Forum Update

Andrew Burrows and Amir Peleg,  
SWAN Council Members



# Welcome new members!

- 1Spatial
- Aqualogy
- Apsara Capital
- Bentley
- Eramosa
- Fluid Consulting
- Hach
- Hitachi
- Intellitect Water
- Jersey Water
- Kamstrup
- S::can
- Tarragona
- Xylem



# SWAN Members

- 77 members from 22 countries



Australia



Germany



New Zealand



Austria



Greece



Philippines



Brazil



Israel



South Africa



Canada



Italy



Spain



Chile



Japan



Switzerland



Denmark



Mexico



UK



Finland



Netherlands



US



France



# SWAN Leadership

## ■ SWAN Team:

- Amir Cahn, Dir. Research & Business Development
- Claire Parsons, Events Manager
- Jen Steart, Finance Controller

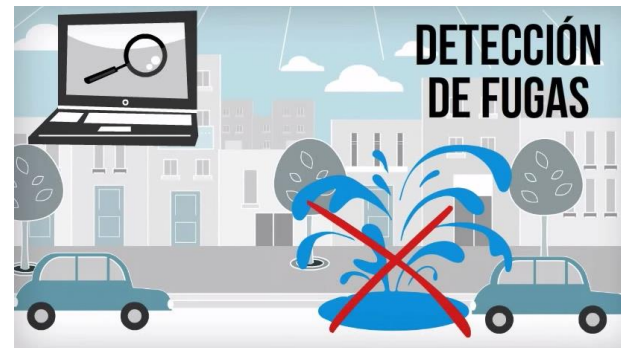
## ■ SWAN Council:

- Amir Peleg, TaKaDu
- Andrew Burrows, i2O Water
- Simon Bunn, Derceto
- Manuel Parra, Schneider Electric
- Ken Thompson, CH2M Hill
- Keith Hilson, Sensus



# SWAN's Influence

- **SWAN Infographic:** “Smart v. Traditional Urban Water Resources Management”
- **Animated clips:** “The Customer Benefits of Smart Water Networks” – in English and Spanish
- Australian Journal of Water Management, “The Power of Water Industry Collaboration” (June 2015)



# SWAN SMART SCORE

*“It would be a good tool for anyone starting to think about planning their SMART journey flagging up areas they need to consider to improve their score.”*

-Mike Bishop, Head of Operational Services, Dŵr Cymru Welsh Water, UK

- Now available in Spanish
- SWAN Members will receive interesting correlations
- Local and global rankings will be available in certain regions, including the UK



# SWAN Tool – Utility Feedback

*“A one stop shop.”*

-Rick Scott, Deputy Director, Seattle Public Utilities, Seattle, Washington

*“The Tool presents the systemic approach of how to integrate the data from all devices and instruments of the water network in order to optimise the water and energy used.”*

-Wagner Oliveira de Carvalho, Senior Project Manager, Prolagos (AEGEA), Brazil

*“The information provides invaluable outlines of systems and benefits which can be used in the presentation of business cases.”*

-Adrian Bird, System Loss Engineer, Unitywater, Queensland, Australia



# Introducing...

## **CUSTOMER METERING**

*Click on any icon below for more information.*

Case Studies

Benefit Analysis

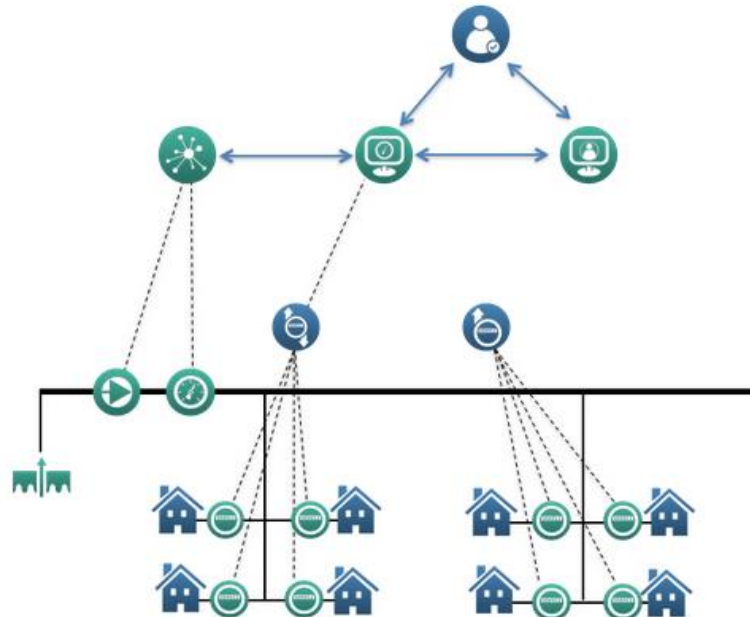
Level 5

Level 4

Level 3

Level 2

Level 1





# A Special Thanks

- Graham Symmonds, FATHOM
- Tal Zur, Arad
- Edna Nakati, Itron
- Keith Hilson, Sensus



# Benefits of SWAN Membership

- **Front row seats:** Free entrance to all SWAN events and discounts to other industry events
- **Access SWAN research:** Interactive Architecture Tool, SWAN SMART SCORE results, Global Utility Survey, infographics and animated clips
- **Take a leadership role:** Join a SWAN Workgroup, speak on SWAN's behalf and share your expertise with global audiences
- **Advance the industry:** Together, we can accelerate awareness and the effective use of Smart Water Networks



# On the Horizon

- SWAN Tool Presentation at ACE (AWWA), Anaheim, CA – June 7-10<sup>th</sup>
- Smart Water & Waste track at Smart Cities Week, Washington, DC – Sept. 14-16
- SWAN Workshop at Aquatech, Amsterdam – Nov. 3-6<sup>th</sup>



# Get involved!

- **Share your ideas** – what would you like to see?

*New research? White papers? Industry surveys?*

- **Spread the word** – get more people to try out the SMART SCORE and Interactive Tool

**The time is now!**

Contact: Amir Cahn, [amirc@swan-forum.com](mailto:amirc@swan-forum.com)



# Join SWAN Today

- Visit: <http://www.swan-forum.com/join.html>
- Select your membership tier and get started!



# Thank You!

