

SWAN 7th Annual Conference

9-10 MAY 2017

TOWER HOTEL, LONDON



Ending uncertainty about measurement reliability

Seth Vance

Global Director, Software Business Unit

Hach Company

How do I know if I can trust my water quality measurements?



How do we deal with this today?

Threshold-based Alarms



Excessive Maintenance

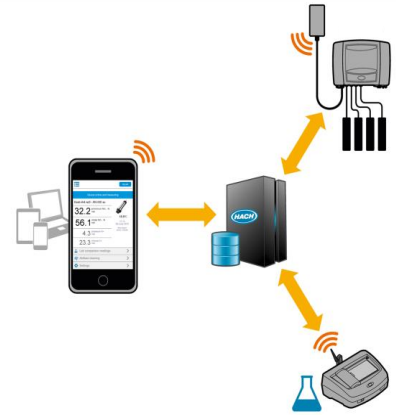


Cross Our Fingers?



What other options exist?

① Guidance through actionable information



Grab sample 3 days overdue: NO₃-N >

Cleaning due in 6 days >

5.7 nitrate NO₃-N mg/L

23.3 chloride Cl⁻ mg/L

18.2 °C

11:13
15 March
2016

New values every 1 minute

- Lab comparison readings >
- Airblast cleaning >
- Settings >



② Alignment of laboratory and online measurements

Lab values available

East.nh4.no3 - AN-ISE sc

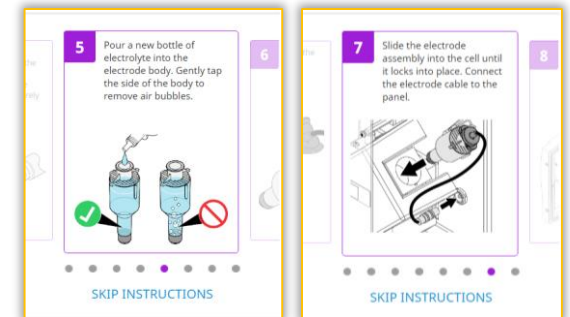
| Parameter | Device | Lab |
|-------------------------|--------|-----|
| NH ₄ -N mg/L | 3.2 | 2.9 |
| NO ₃ -N mg/L | 5.6 | 5.6 |

Sample taken 15 July 2016, 14:33
Taken by Rudi Schmidt
Notes none

Sample analyzed 16 July 2016, 9:15
Analyzed by Jane Smith
DR 3900 methods #30 NH₄-N
#31 NO₃-N

DO NOT UPDATE UPDATE DEVICE

③ Simple instructions in the palm of your hand



What benefits are users experiencing?



Reduce ferry trips
to/from island



Link lab and
online results



From reactive
to proactive



Validate data for
optimization



Want data to
'come to them'



Eliminate cost
of local displays





Thank you