

Extraction

Section 1: valve Ø150m



Section 2: valve Ø150m



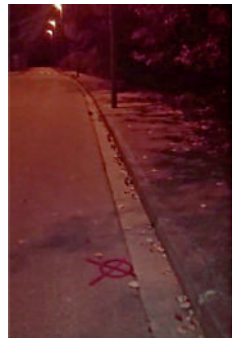
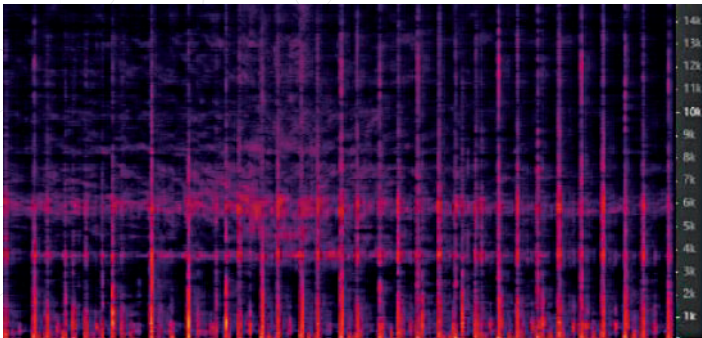
Extraction detail



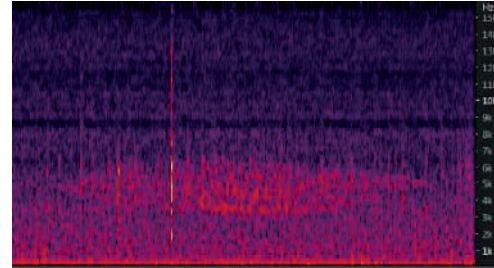
RESULTS: Validation and reparation

Once the information collected in both sections was analyzed, the final report showed the existence of two leaks, one anomaly and their exact location in the inspected section. Once the location of the leaks was confirmed, the ATL technicians proceeded to carry out the corresponding openings at the two marked points to proceed with their repair and, consequently, recover the flow rates of maximum use of the network.

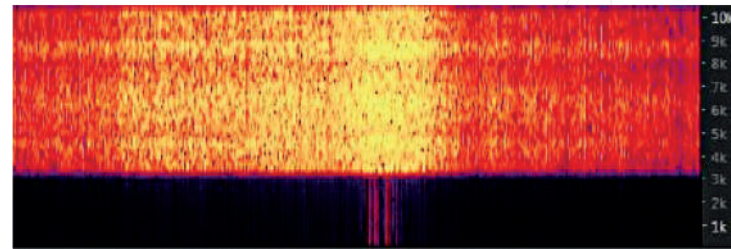
Leak 1



Leak 2



Anomalie



CLIENT TESTIMONY



"After receiving the inspection final report, we decided to repair those leaks. When we began the repair work, we found the leaks at the exact points indicated."

"As a reliable system, we have incorporated the Nautilus System into our catalogue of leak location systems with fully satisfactory results to date."